

# PANOBLU

## SEE EVERYTHING ALL THE TIME ALL AT ONCE

Panoblu is the 360° infrared camera specifically built for marine and yachting applications. Designed to endure the harshest maritime environments, using up to 16 LWIR sensors, the system delivers superior 360° 4K live view day and night. Enabling operators to see everything,

all the time, all at once around the vessel — even in complete darkness, fog or adverse weather conditions. Panoblu offers instant touch-to-zoom, true colour and thermal 360° views, and one-click recording and archiving, ensuring you never miss a detail.

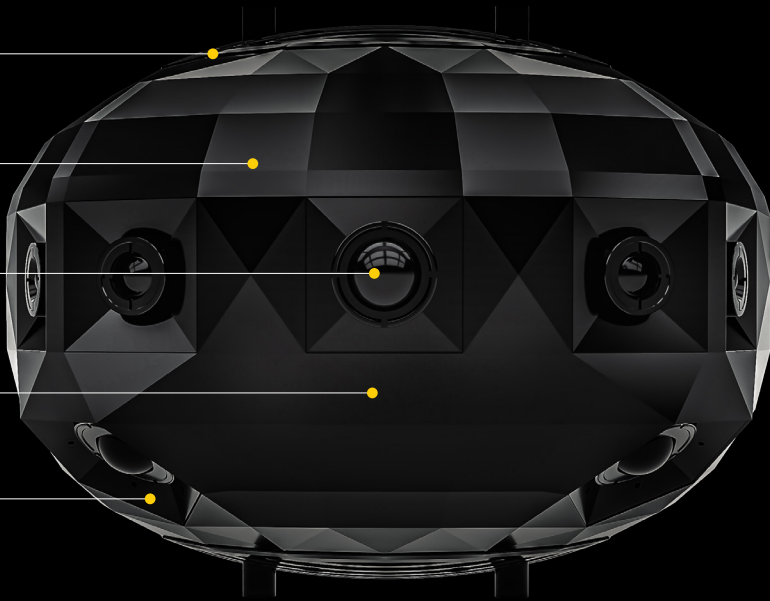
**Dual Viewing**  
Switch seamlessly between true colour and infrared views

**Rugged**  
Withstands harsh marine environments

**Omni-Aware**  
Provides full 360° live video coverage

**Precision**  
Facilitate manoeuvring with comprehensive 360° visibility

**Security**  
See everything around you all the time, all at once



## Specifications

Model Number: PIR 2084

Optical Resolution	~ 5120 pixel capture resolution on the horizon 12 IR camera stitch	360° horizontal 118° vertical (-19° above the horizon -90° below) 360° vertical option available on request
Wavelengths	Longwave Infrared (LWIR): 8-12 µm	Visible spectrum: 380 - 750 nm (PIR 2xxx models)
Frame Rate	Up to 25fps depending on resolution settings (both IR & visible spectrum)	
Display	360° panoramic view in 2:1 aspect ratio, featuring up to 36x digital zoom down to 11° field of view	False Colour and Night Mode view options (available with future software update)
Operational		
Control	Browser based touch compatible UI. Compatible with Windows, Mac, Linux, iOS, Android	Browser-based web interface with real-time WebRTC video stream
Storage	Integrated 2TB SSD storage	Optional onboard server for extended storage and cloud backup available (8TB+)
Power Consumption	Peak 90W via POE++ 802.3bt	
Operating Temp.	-20° to +50°C	
Motion Degrees	Camera contains no external moving parts	Equipped with advanced cooling fan for thermal management
Ingress Protection	IP67	



Correct as of Nov. 2025  
Specifications for other models on request

# PANOBLU IR

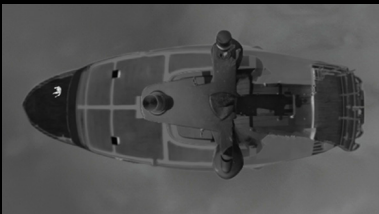
## Your Eyes At Night For Maritime Navigation

With 360° Omni Awareness, there's nothing you can't see, day or night! Using the panoramic view, captains and crew gain a virtual flybridge overview of their surroundings at sea, at anchor, and in harbour. See what the eyes can't.



### Ultra-High Definition

Easily zoom in to coast lines, approaching vessels, people or objects in the water.



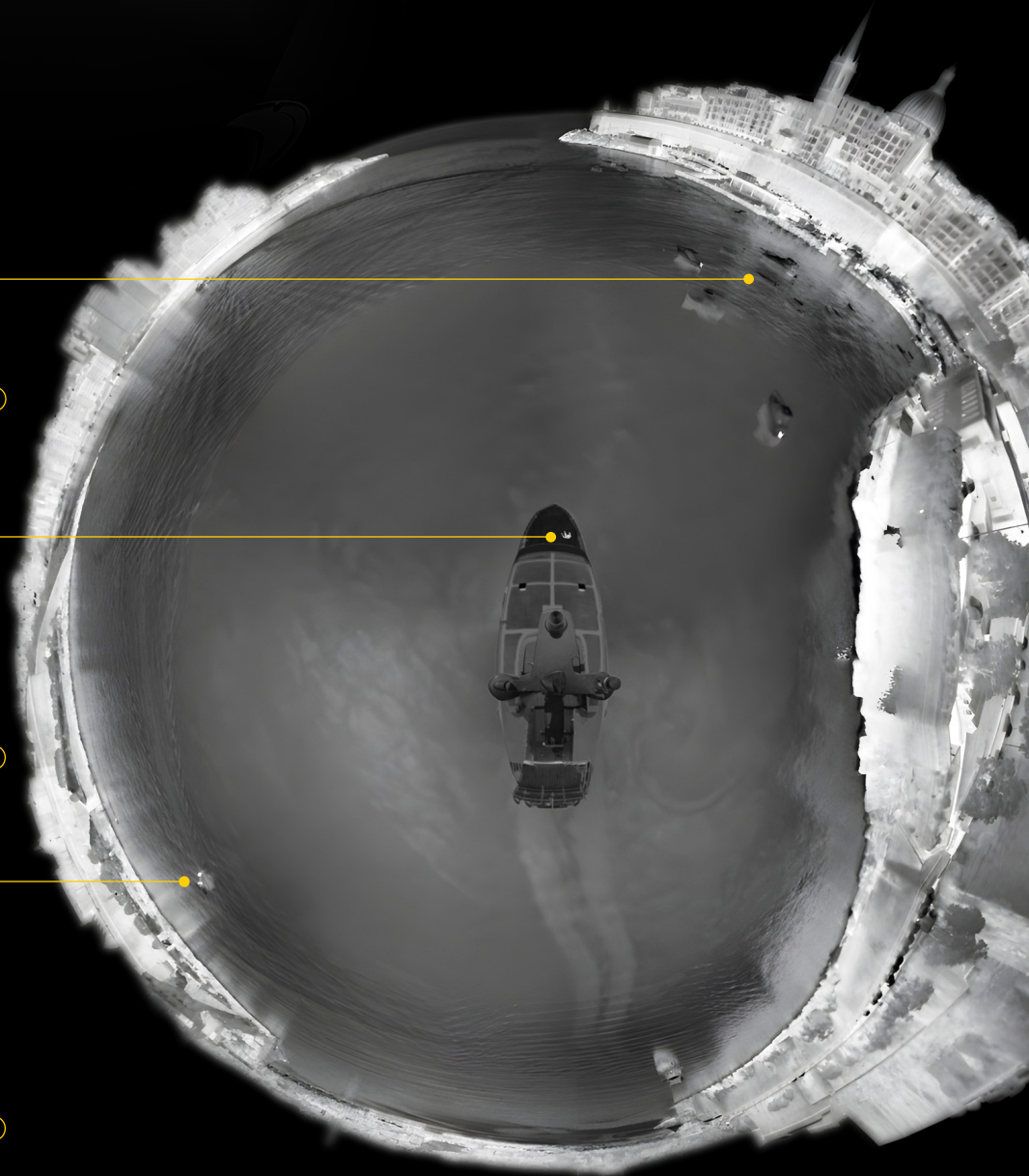
### Virtual Flybridge View

See everything from up high, aid with navigation and manoeuvring, where people are on and off board.



### Objects of Interest

Get a closer look at possible hazards & spot objects you were not looking for. Use it as an early warning system.







## Your Yacht, Your Journey, Your Story

Panoblu SeaView is the premier 360° live video for superyachts. Capturing the beauty, the journey and the spirit of exploration, SeaView lets you revisit every incredible moment of your voyage. Each jaw-dropping vista, stunning sunset and discovery captured in full 360° 4k video.



360°



### 360° Panoramic Imaging

Capture every detail of your voyage in stunning 4k video.

### Secure Onboard Storage

All clips & images securely stored on board with full access control.

### Interactive Map Integration

See your entire journey, mapped & documented.

### User-Friendly Interface

Touch to navigate through panoramas & relive your experiences on all devices.

### Precision Views

Pinpoint and revisit each location along your route.

### Memories forever

Fresh perspectives & unique angles to relive moments with guests.



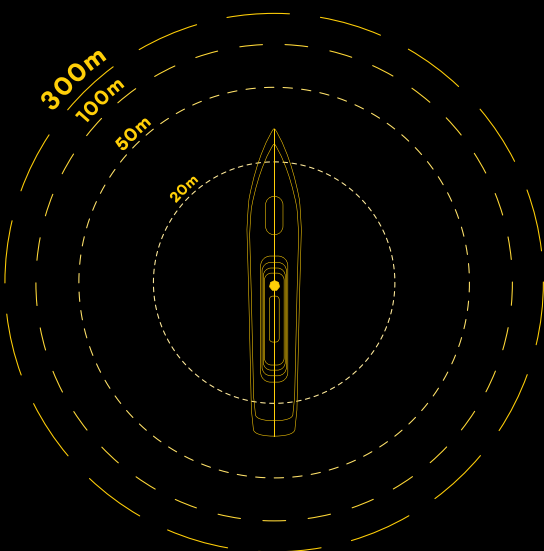
# Panoblu RAD

## Range Awareness Display

Panoblu RAD overlays real-time range indicators onto your live 360° view, giving captains and crew instant distance awareness in every direction. More than just a visual aid, it delivers real insight, helping prevent collisions, monitor blind spots, and enhance safety across and around the vessel.

### THE NEW STANDARD IN SITUATIONAL AWARENESS FOR YACHTS

- Get instant, visible proximity indicators in the live 360° view.
- RAD shows true ranges to vessels, hazards and objects at the waterline.
- Provide crews with immediate, intuitive awareness for confident navigation, docking and anchoring, day and night.



### RAD FEATURES

#### IMMEDIATE INSIGHT

Range markers extend up to the horizon.

#### REAL-TIME

Spatial awareness for rapid decision-making.

#### CONFIGURABLE

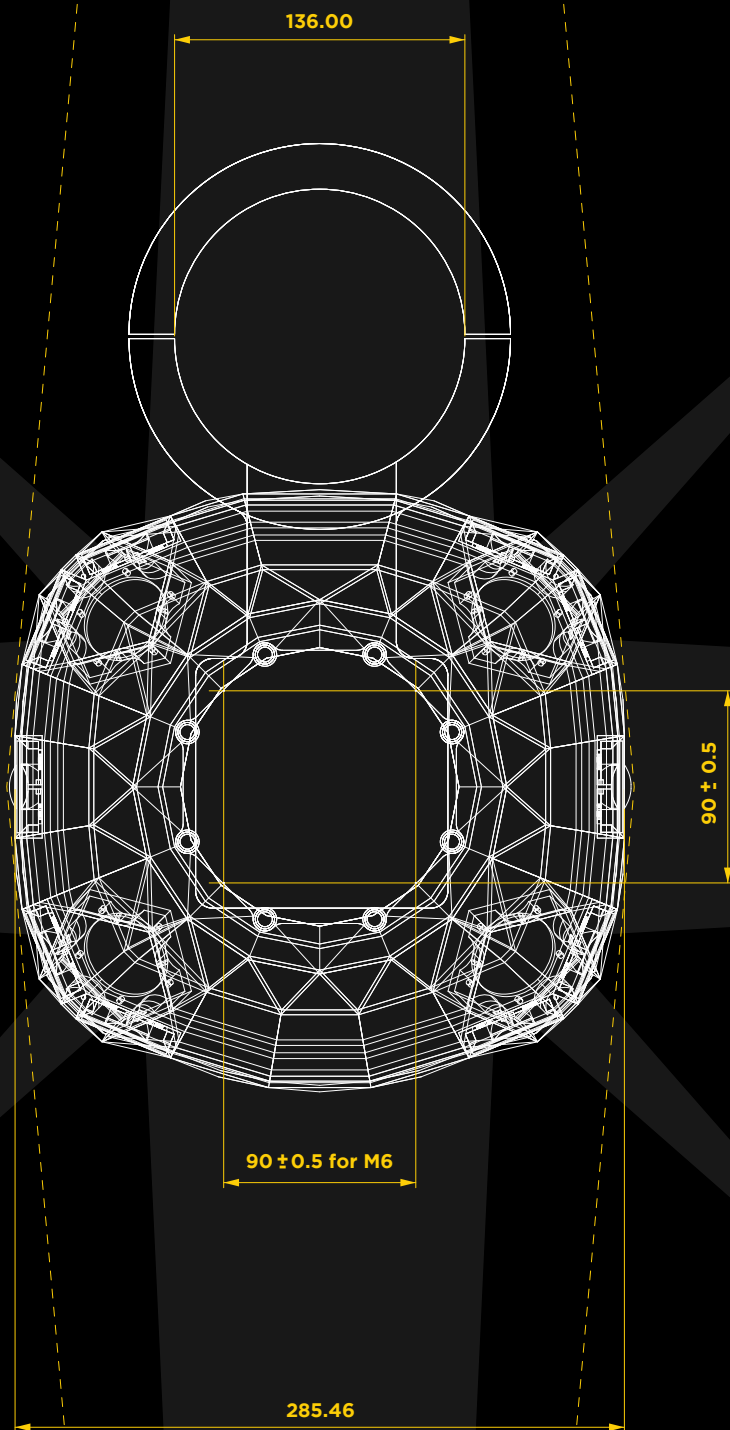
RAD can be configured to your yacht's preference.

#### DAY OR NIGHT

Supports both visible and thermal infrared views.



SAFE ZONE FOR  
MAST INSTALLATION



# Panoblu User Access Tiers

Customise Who Sees What, When & Where

When adding a new camera system to a yacht, it's natural to think about privacy just as much as functionality. At Panoblu, we've designed our 360° camera system to support both. It gives you a complete view of your vessel when you need it — but never shares anything you don't want it to.

## Smart, Secure, Simple

Whether you're managing a fleet or preparing for charter guests, the system can be tailored to match how your yacht operates. You can define different access levels based on role, location, or event — here's an example of how it can work:



- LEVEL 1**     **CAPTAINS ONLY**  
Used for navigation and incident logging. No one else onboard sees the feed.
- LEVEL 2**     **CAPTAINS + CREW**  
Perfect for watchkeeping (Rule5) and on deck management, particularly in low-visibility or high-traffic scenarios.
- LEVEL 3**     **CAPTAINS + CREW + GUESTS**  
Guests can access selected live views on board or their past itinerary after their time on board is finished, turning the system into a part of the guest experience, without compromising operations.
- LEVEL 4**     **CAPTAINS + CREW + GUESTS + OWNERS**  
Owners can view the vessel's surroundings for peace of mind or leisure, even when remote. Adds presence without intrusion.
- LEVEL 5**     **CAPTAINS + CREW + GUESTS + OWNERS + MANAGEMENT COMPANIES**  
Enables secure remote access for fleet oversight, incident reviews, and insurance documentation.
- LEVEL 6**     **PUBLIC VIEW (OPTIONAL)**  
For expedition yachts or scientific missions, you can livestream or share curated footage in the public interest, for PR, research, or education.







PANOBLU

**SV**  
SEAVIEW

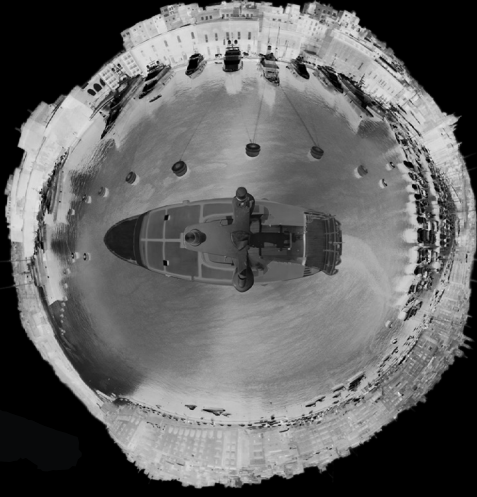
**IR**  
INFRARED

**PANOBLU** **SV**

Panoblu SeaView is the only 360° panoramic camera system designed exclusively for superyachts. The best way for owners and guests to relive their journeys, travels and revisit stunning destinations anytime. Now in live 360° video for full situational awareness on the bridge or anywhere onboard.



DAY



NIGHT



**PANOBLU** **IR**

Panoblu IR is the only full 360° infrared thermal camera system delivering superior live video in 4K resolution to the bridge or anywhere onboard. As the definitive solution for situational awareness, Panoblu IR is the ultimate in security and safety even in complete darkness.

**SEE EVERYTHING  
ALL THE TIME  
ALL AT ONCE**

[WWW.PANOBLU.COM/IR](http://WWW.PANOBLU.COM/IR)