



SEE EVERYTHING 360° CAMERA SYSTEM

www.panoblu.com | explore@panoblu.com

THE PROBLEM

Traditional maritime camera systems were never designed for complete awareness. Captains are left scanning, interpreting and reacting, rather than seeing the full picture in real time.

Traditional PTZ systems leave captains reliant on directional, fragmented viewing, unable to see everything at once. Manual scanning increases bridge workload, creates potentially dangerous blind spots, and forces decisions based on incomplete information.

WHAT THIS MEANS IN REAL OPERATIONS



Slower decision making



Reliance on interpretation



Increased bridge workload



Reduced confidence in critical situations

THE SHIFT

FROM: REACTIVE VIEWING

3 x PTZ Cameras

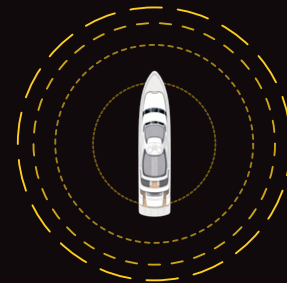


blind spot

DIRECTIONAL & FRAGMENTED, CAN'T SEE EVERYTHING

TO: REAL-TIME AWARENESS

1 x Panoblu System



CONTINUOUS 360° SITUATIONAL AWARENESS

THE SOLUTION

Panoblu transforms the way captains and crew experience the water, replacing reactive, fragmented viewing with continuous, complete awareness. See everything, all the time, all at once.

DECISIONS ARE MADE WITH INFORMATION NOT GUESSWORK

Panoblu gives captains and crew unmatched situational awareness on the water, spotting objects, vessels and hazards before they become a problem. With 360° thermal and visible light 4K video, Panoblu's technology delivers superior watchkeeping and dramatically reduced blind spots, enabling complete certainty, day or night.

WHAT THIS MEANS IN REAL OPERATIONS



Detect hazards during night-time navigation



Maintain visibility in poor weather conditions



Dock & manoeuvre confidently in tight spaces



Improved situational awareness in busy anchorages